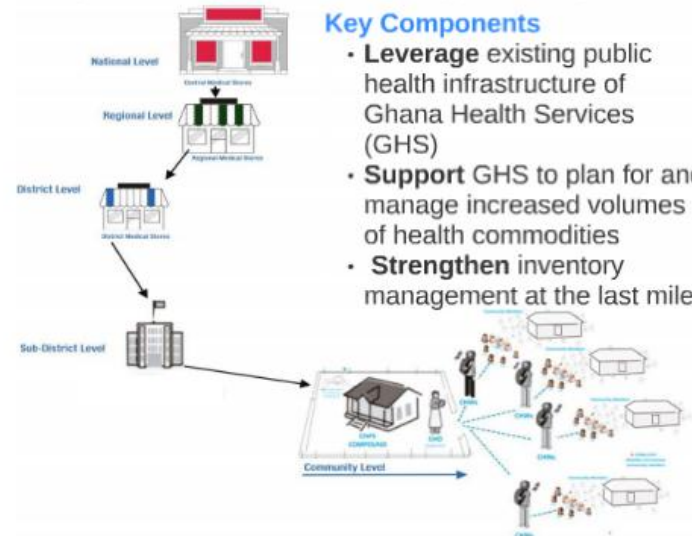


Supply Chain Design to Support the Government of Ghana National Community Health Worker (CHW) Program

The Government of Ghana's National CHW Program, formally endorsed by the Minister of Health in January 2014, calls for the training and deployment of 27,845 CHWs by 2023. CHWs will provide preventative, curative, and referral services at the household level. The goal of the program is to provide primary healthcare coverage to 100% of the country's rural population.

Proposed Supply Chain Management System

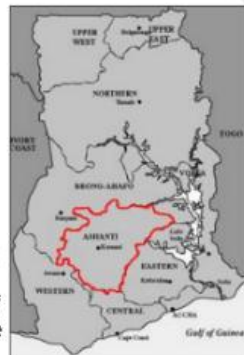


Key Components

- **Leverage** existing public health infrastructure of Ghana Health Services (GHS)
- **Support** GHS to plan for and manage increased volumes of health commodities
- **Strengthen** inventory management at the last mile

Proof of Concept/ Pilot Planning

A pilot of the national healthworker plan will be executed in 6 districts of Ashanti beginning mid 2015. The pilot will train and deploy 1,300 CHWs to cover 900,000 beneficiaries. The pilot will be used to assess the operational plans of the CHW system before it is taken to scale nationally.



Supply Chain Considerations for CHW Pilot Planning

Procedures

- Inventory Control Levels
 - How much stock of each product should the CHW carry?
- Ordering and resupply policies
 - When, what, how, and how often do CHWs order and receive new products?

Infrastructure and Distribution

- Verify that Community-based Health Planning and Services (CHPS) compounds have adequate storage facilities
- Develop a strategy for supporting CHW travel costs to pickup products

Products and Procurement

- CHWs will be supplied with 29 key essential medicines for neonatal, mother, and child care
- Products selected to support achievement of Millennium Development Goals 4, 5, 6.

Training

- Develop supply chain management training curriculum
- Training plan and rollout
- Develop monitoring and supportive supervision plan



1,+,+,+,+,+

One Million Community Health Workers Campaign

THE EARTH INSTITUTE
COLUMBIA UNIVERSITY