

Message from Jeff Sachs

watch video (7:03) 

In this video, Jeffrey D. Sachs, director of the Earth Institute, talks about new climate research that reinforces the findings of the Intergovernmental Panel on Climate Change's 4th Assessment report that confirms climate change is having measurable affects on diverse populations around the world.

Sachs also discusses an upcoming [Earth Institute Fellows symposium](#) that will showcase the extraordinary cross-disciplinary work of these emerging scientists.

In addition, Sachs talks about Columbia College's new sustainable development special concentration, which draws on expertise from Columbia's E3B Department, the School of International and Public Affairs, the Department of Environmental Engineering, the Mailman School of Public Health and the Economics Department. The program has been approved in Columbia College and the School of General Studies, and will be available for undergraduates to declare beginning Fall 2007.

**Models Show Drought in Southwestern U.S. Here to Stay**

The findings of a new study, appearing in *Science*, show that there is a broad consensus amongst climate models that the Southwest will dry significantly in the 21st Century and that the transition to a more arid climate

Experts In the News**Arctic Sea Ice Melting Faster, a Study Finds**

International Herald Tribune, May 1, 2007

The Science of Curbing Emissions

Newsweek, April 16, 2007

An African Revolution by Pedro Sanchez

Newsweek, April 16, 2007

Permanent Drought Predicted for the Southwest

Chicago Tribune, April 6, 2007

Poor Nations to Bear Brunt as World Warms

The New York Times, April 1, 2007

Climate Scientist Says Government Censorship Has Confused Public

ABC News, March 19, 2007

Rapid Victories Against Extreme Poverty by Jeffrey D. Sachs

Scientific American, April 2007

CO2 Arithmetic

by **Wallace S. Broecker**

Science, March 9, 2007

A Climate for Change

by **Jeffrey D. Sachs**

TIME, March 8, 2007

Take the Guessing Out of Giving Aid to Africa by Jeffrey D. Sachs

The Financial Times, March 1, 2007

[download as pdf](#)

[more recently in the media](#)

Special Events at the Earth Institute

Thurs., May 3, 10am, Lerner Hall, Rm 555
Earth Institute Seminars on Sustainable Development: Millennium Villages
Jeffrey D. Sachs, Cheryl Palm, and Pedro Sanchez

Thurs., May 7, Lerner Hall, Rm 555, 9am-1pm
Earth Institute Fellows Symposium

Subscribe to this monthly e-newsletter:

e-mail address

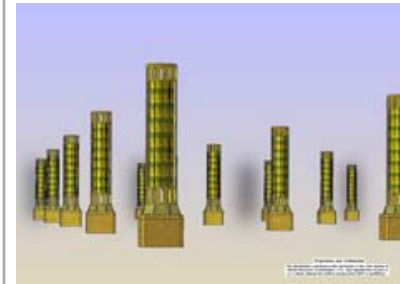
Submit

[See other Earth Institute subscriptions](#)

Earth Institute News RSS 

Earth Institute Events RSS 

[What is RSS?](#)

**First Successful Demonstration of Carbon Dioxide Air Capture Technology Achieved by Columbia University Scientist and Private Company**

Global Research Technologies, LLC (GRT), a technology research and development company, and Klaus Lackner from Columbia University have achieved the successful demonstration of a bold new technology to capture carbon from the air. The "air extraction" prototype has successfully demonstrated that indeed carbon dioxide (CO₂) can be captured from the atmosphere. This is GRT's first step toward a commercially viable air capture device. [more](#)

**Millennium Villages Spotlight on Sauri: Two Years On**

may already be underway. If these models are correct, the levels of aridity of the recent multiyear drought, or the Dust Bowl and 1950s droughts, will, within the coming years to decades, become the new climatology of the American Southwest. [more](#)



How Will Climate Change Affect the United States?

A new Web site from the Earth Institute uses [EPA](#), [CIRES](#), [Pew Center on Climate Change](#) and [IPCC](#) data to show how climate change could affect U.S. states.

choose a state:

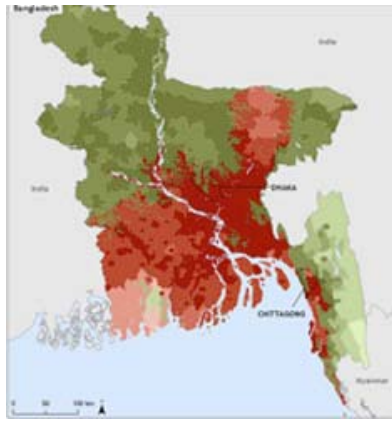


The Recyclemania trophy

Lamont-Doherty Wins First Place in School Recycling Contest

The Lamont-Doherty Earth Observatory came in first place in [Recyclemania's](#) Per Capita Classic category, recycling an average of 101.12 pounds/per person over a 10-week period. The Lamont-Doherty Earth Observatory also won the Targeted Material (pounds per person) $\frac{3}{4}$ Paper category, coming in at 89.96 pounds.

RecycleMania was launched in 2001 as a friendly challenge between Ohio University and Miami University to increase recycling on their campuses. The contest has expanded rapidly in six years' time from two schools in 2001 to 201 colleges and universities in 2007 spanning 42 states and the District of Columbia.



New Research Analyzes Countries at Greatest Risk from Climate Change Impacts

The first global study to identify populations at greatest risk from rising sea levels and more intense cyclones as a result of climate change will be published in the peer-reviewed journal *Environment and Urbanization*. The study was conducted by scientists at the Center for International Earth Science Information Network and the International Institute for Environment and Development. [more](#)

Nancy Degnan Appointed New CERC Executive Director

In January 2007, the governing board of the [Center for Environmental Research and Conservation \(CERC\)](#) agreed to a joint management model for CERC's education, training and research programs. The governing board supported Shahid Naeem becoming the newly created director of science (stepping down from his role as interim executive director) and Nancy Degnan becoming the executive director (stepping up from her role as associate director). [more](#)



Earth Institute Announces 2007-2008 Marie Tharp Fellows

The Earth Institute at Columbia University is pleased to announce the 2007-2008 Marie Tharp Fellows — four women who are making noteworthy contributions to the study of the natural world. [more](#)

Comments and Suggestions

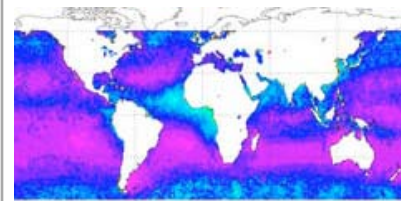
Contact our [editor](#)

[Past issues](#)

In just two years since the start of the Millennium Village in Sauri, Kenya, nearly 55,000 villagers are witnessing incredible changes — changes that, for the first time, are bringing hope to families who once endured chronic hunger, disease and extreme poverty. Today, the Millennium Village in Sauri is an example of the success that can be achieved through community leadership bolstered by targeted investments and critical interventions such as fertilizers and bed nets. [Read about the remarkable results achieved since the start of the project](#)

New Study Sheds Light on How Earthquakes Happen

New research into the way tectonic plates move past one another deep beneath the surface of the Earth reveal new seismic and volcanic processes in such places as the Pacific "Ring of Fire." Peter Kelemen, a geologist at the Lamont-Doherty Earth Observatory, and Greg Hirth, a geophysicist at Woods Hole Oceanographic Institution, modeled so-called "intermediate-depth earthquakes" that occur at depths of 50 to 300 km (30 to 180 miles) in the Earth. Visit www.nature.com to read more. (subscription required).



Global 'Sunscreens' Has Likely Thinned, Report NASA Scientists

A new NASA study has found that an important counter-balance to the warming of our planet by greenhouse gases — sunlight blocked by dust, pollution and other aerosol particles — appears to have lost ground. The thinning of Earth's "sunscreens" of aerosols since the early 1990s could have given an extra push to the rise in global surface temperatures. The finding was published in the March 16 issue of *Science*. [more](#)



Diamond Shines

Jared Diamond, Professor of Geography at UCLA, spoke to over 500 people on April 25 at Low Library about the research that became the basis of his book, "Collapse — How Societies Choose to Fail or Succeed."

[watch video](#)

