

Message from Jeff Sachs



watch video (8:42)

In this e-newsletter video, Jeffrey D. Sachs discusses two recent Columbia University announcements — a \$15 million Gates Foundation Award to the Earth Institute, and this year's Nobel Prize in Economics, which was awarded to Columbia Professor Ned Phelps, director of the Earth Institute's Center for Capitalism and Society.



Gates Foundation Awards \$15 Million to Support Science-Based Effort to End Poverty in Africa

The Earth Institute at Columbia University announced that it has received \$15 million from the Bill and Melinda Gates Foundation to advance scientific research and efforts to slash poverty, disease and hunger in Africa. The grant supports The Earth Institute at Columbia University, which is currently working in 10 African countries to battle the complex challenges of poverty with proven scientific interventions and policy recommendations at the local and national levels. [more](#)

Experts In the News

Scientist Seeks Full Picture of Katrina's Toll
Dallas Morning News, October 29, 2006

India On the Economic Charge?
Gulf News (India), October 31, 2006

Text Messaging for Safe Water in Bangladesh
World Changing, October 27, 2006

The Thirteenth Tipping Point
Mother Jones, Nov/Dec 2006 Issue

Rising Seas and Stronger Storms Threaten New York City
Live Science, October 25, 2006

Small-scale Projects Transforming Villages by Pedro Sanchez
The Des Moines Register, October 21, 2006

The Planet in Peril — Part I
by James E. Hansen
Yale Global Online, October 21, 2006

Food Aid Money for Poor in Africa May Dip
Des Moines Register, October 19, 2006

[more recently in the media](#)



Edmund S. Phelps, Seminal Figure in Modern Economics, Wins Nobel Prize

Edmund Phelps, a seminal figure in modern economics, has won the 2006 Nobel Prize in Economics. Phelps is head of the Center on Capitalism & Society at Columbia University, now within the Earth Institute, which

Subscribe to this monthly e-newsletter:

e-mail address

Submit

[See other Earth Institute subscriptions](#)

Earth Institute News RSS

Earth Institute Events RSS

[What is RSS?](#)



Accounting for Katrina's Dead

A new project seeks to compile an online list of all Gulf Coast residents who died as a result of direct and indirect effects of the storm, calling on those who were there to contribute information. [more](#)



1980



2005

Alaskans Feel the Heat of Global Warming

A new study shows that four out of five Alaskans believe global warming is happening and is a serious threat to the state. The statewide survey involved telephone interviews with more than 1,000 Alaskan adults, and was



Kagenge Primary School Becomes First Rural School in Rwanda to Get Computer

Setting up a computer in a remote rural village in Rwanda has its challenges: electricity is spotty and expensive; teachers have little computer training; and you can forget about IT support. But today, two computers are up and running at the Kagenge Primary School, and the teachers are fully trained to use them, thanks to a joint effort by the school, a local university, and the Millennium Villages Project. [more](#)



The Rise of Transnational Corporations from Emerging Markets: Threat or Opportunity?

For many people, consumers and policy makers alike, the full impact of globalization is not yet evident — even though it already stands to reconfigure international economics and make the world a different place in the process. A recent conference at Columbia University explored the many fundamental ways that foreign direct investment (FDI) effect their home countries as well as the countries in which they invest. [more](#)

conducts and promotes research on capitalism. He is McVickar Professor of Political Economy at Columbia. [more](#)

Special Events at the Earth Institute

Thurs., Nov. 2, 4-6pm, Lerner Hall, Satow Room, 5th floor

A Blueprint for Sustainable Development on a Blue Planet

Tues., Nov. 14, 6:30- 8pm, Barnes & Nobles (Bookstore), 2922 Broadway (at 115th St.)

Understanding Environmental Policy: Presentation and Discussion

Wed., Nov. 15, 6-8pm, Miller Theatre

The Earth Institute Student Lecture: Practical Approaches to Climate Change

Thurs., Nov. 16, 7-9pm, Miller Theatre

Sustainable Development — Can It Save the Creation?

Thurs., Nov. 30, 6-8pm, Schapiro Center, Davis Auditorium

Humanitarian Relief in the Crossfire: Technological Revolution - Moral Standstill

Thurs., Nov. 30, 6-8pm, 1512 International Affairs Building

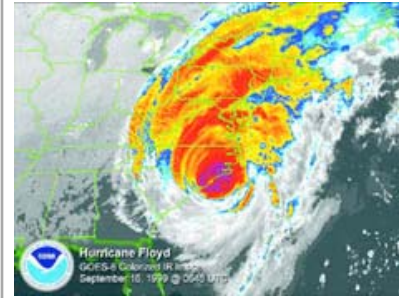
Master of Public Administration Program in Environmental Science and Policy Open House

Comments and Suggestions

Contact our [editor](#)

[Past issues](#)

conducted early this summer. [more](#)



Scientists Look at Sea Level Rise, Hurricane Risks to New York City

More than 8 million people live in New York City, and it has hundreds of miles of coastline that are vulnerable to hurricane threats. Using computer climate models, scientists have looked at rising sea levels and hurricane storm surge and reported on them at a science meeting this week. [more](#)



Evidence Overturns Assumptions About Quake Risk of Continental Faults

For several decades, geologists have thought the North American tectonic plate was riddled with a type of active fault that permitted the continent to expand over the past several million years. However, a new study challenges that assumption and suggests that these faults are actually the remains of massive, gravity-driven rock slides and not tectonically active features of the Earth's crust. [more](#)