

## Message from Jeff Sachs



Real Video (6:19)

Quicktime Video (6:19)

In this video address, Jeffrey D. Sachs, director of the Earth Institute, discusses a new center at the Earth Institute — The Center for Sustainable Urban Development, led by Columbia Professor Elliott Sclar. Sclar and his team of experts are examining transportation and land use problems, and have begun work in Ruiru, Kenya, thanks to a grant from the Volvo Foundation.



## Earth Institute Receives \$2.4 Million Grant to Study Urban Land Use and Transportation in Developing Countries

*New Center for Sustainable Urban Development (CSUD) plans first project in Ruiru, Kenya*

The Earth Institute at Columbia University has been awarded a five-year \$2.4 million grant by the Volvo Research and Educational Foundations of Gothenburg Sweden to establish a new Center for Sustainable Urban Development (CSUD).

## In the News

### New Data Show Global Warming

Lead scientist James Hansen, a prominent climatologist with NASA's Goddard Institute for Space Studies at Columbia University, described the findings recently published in *Science* on the planet's out-of-balance energy exchange as a "smoking gun" that should dispel doubts about forecasts of climate change. *From BBC News, April 28, 2005*

[Read more stories on this topic](#)

### The Climate of Man — Part I & Part II

In Elizabeth Kolbert's three-part series on anthropogenic climate change, the work of EI's James E. Hansen is profiled. Wally Broecker, Newberry Professor of Earth & Environmental Sciences, and Peter de Menocal, a climatologist from the Lamont-Doherty Earth Observatory are also referenced. *From The New Yorker, April 26, 2005 and The New Yorker, May 5, 2005*

### U.S., Europe Spar on African Aid

"There is a near international consensus to double aid, with the notable exception of the United States government," said Columbia University economist Jeffrey D. Sachs, who heads the U.N. poverty initiative and is director of The Earth Institute. "And the American people ought to know about this." *From Forward, April 22, 2005*

### Climate: The Sea Level-Climate Connection

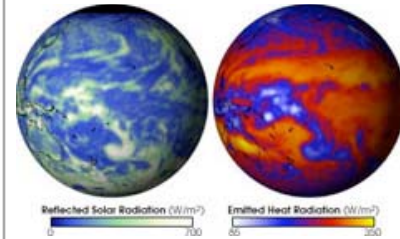
"The only reasonable thought is that all of it has to be driven by climate change," said Steven Goldstein of the Lamont-Doherty Earth Observatory at Columbia University. *From The Washington Times, April 18, 2005 and Discovery News, April 20, 2005*

### Spring Lecture Series Showcases Experts in Earth Science

From the Palisades to Hollywood, experts on oceans, geology, climate and earthquake prediction will share their research on science-related topics in a series of spring lectures hosted by Lamont-Doherty Earth Observatory. *From The Journal News, April 17, 2005*

### World Bank and I.M.F. Seek Doubling of Aid to Poor Lands

Already this year, a group of development experts advising the United Nations, headed by EI Director Jeffrey D. Sachs, and a commission headed by the British prime minister, Tony Blair, have recommended a doubling of aid and called on rich nations to quickly ratchet up spending. *From The New York Times, April*



## Scientists Confirm Earth's Energy Is Out Of Balance

Using satellites, data from buoys and computer models to study the Earth's oceans, scientists have concluded that more energy is being absorbed from the Sun than is emitted back to space, throwing the Earth's energy "out of balance" and warming the planet.

Scientists from the National Aeronautics and Space Administration (NASA), The Earth Institute at Columbia University, and Lawrence Berkeley National Laboratory in California have confirmed the energy imbalance by precisely measuring ocean heat content occurring over the past decade. [more](#)

## Ice-Age Ocean Circulation Reacted To, Did Not Cause, Climate Change at Glacial Boundaries

*New tracer demonstrates carbon cycle changes preceded thermohaline changes*

Scientists from the Lamont-Doherty Earth Observatory (LDEO) have provided new evidence that ocean circulation changes lagged behind, and were not the cause of, major climate changes at the beginning and end of the last ice age (short intervals known as glacial boundaries), according to a study published in the March 25, 2005 issue of *Science* magazine. [more](#)

The Earth Institute center, under the direction of Elliott Sclar, Professor of Urban Planning and Public Affairs, will focus on the utilization of land use and transportation planning to create physically and socially sustainable cities in developing countries. [more](#)


## A Dollar a Day in Sauri, Kenya

### Millennium Villages Project, Sauri

Cheryl Palm, Senior Scientist for the Millennium Villages project, consults with Dr. Steven Biko and members of the village of Sauri, Kenya.

For a closer look at life at "One a Dollar a Day," please watch this video:

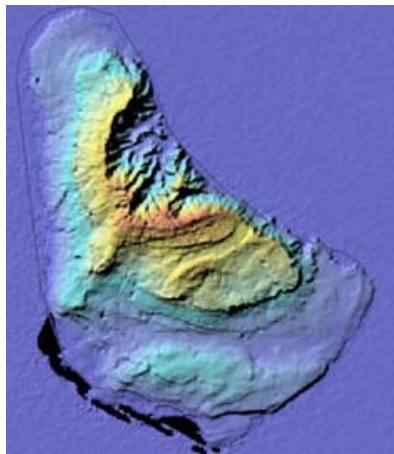
RealPlayer (8:05) 

Quicktime (8:05) 

For more about the Millennium Villages Project, visit the [project's web site](#).

## Study Offers Alternative View on How Faults Form in the Ocean's Depths

Scientists have long held the belief that faults along the deep ocean's mountainous landscape occur only during long periods when no magma has intruded. Challenging this predominant theory, findings from a completed study show how differences in mid-ocean ridge magma-induced activity produce distinctly different types of faults in the ocean floor. [more](#)



## Sea Level More Variable Than Previously Thought

### Coral record reveals evidence of short-term changes, study reveals

Scientists from the Lamont-Doherty Earth Observatory believe that sea level can change more quickly and dramatically — at least in the short term — than previously thought.

The prevailing theory is based on natural variations in the Earth's orbit. But William Thompson and Steven Goldstein published a paper in the April 15 issue of *Science* based on fossil-dating in coral reefs that shows sea levels changing by as much as 30 meters over the short term (a few thousand years). [more](#)

## China Must Confront Growing Environmental Challenges, Concludes Panel of Experts

China is arguably the world's latest economic wunderkind.

14, 2005

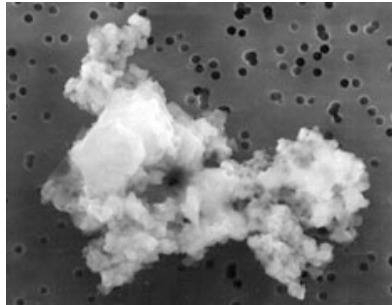
## Jeffrey D. Sachs Named One of 100 Most Influential People For 2nd Year in Row

Bono, lead singer of U2, writes a testament to the work of his friend Jeffrey D. Sachs. *From Time Magazine, April 2005*

## The Science Debate Behind Climate Change

"I think we can say very clearly, with the same amount of energy going in and less going out, [the Earth] has to warm up," said Drew Shindell, a NASA climate modeler at the Goddard Institute for Space Studies. "That's elementary physics." *From CNN, April 8, 2005*

[more recently in the media](#)



## Written in Dust

Many scientists fight a never-ending battle against dust in their laboratory. Lamont-Doherty researcher Gisela Winckler, however, can't get enough. Before you send her what's under your bed, though, she's only interested in a very special kind of dust — the kind that rains down on the Earth from outer space. [more](#)



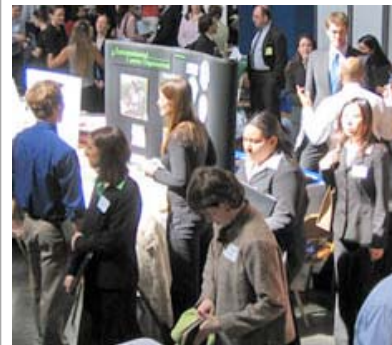
## Environmental Science and Policy MPAs Present Results of Workshop Projects

From collaboration with the United Nations to the Battery Park City Authority, students in the MPA program in Environmental Science and Policy have worked all semester on real-world environmental projects that will affect both local and international communities. On April 20, 2005, students gave their final presentations. [more](#)

## Scientific Community Needs to Develop Cross-Disciplinary Standards and Practices in Academia, Says Report

Roberta Balstad, director of CIESIN, talks to CODATA about the future of science data and information

In December, 2004, The International Council for Science (ICSU) published the Priority Area Assessment



## Array of Options For Students Attending Ivy Environmental Career Fair

Columbia University students enrolled in environmental and sustainable development programs connected with a variety of environmental recruiters at the first annual All-Ivy Environmental Career Fair, hosted by the Office of Education Programs at The Earth Institute. The fair was held on Friday, April 8th in Low Library and featured internship, educational and full-time career opportunities for environmental and sustainable development students of all degree-levels. [more](#)

## Special Events at the Earth Institute

### Book Tour Dates for Jeffrey D. Sachs' "The End of Poverty"

Thursday, May 12, 3:30-4:30pm, Monell Building, Lamont-Doherty

### 11th Annual Jardetzky Lecture: Recent Insights into the Anthropogenic Perturbation of the Global Carbon Cycle

Thursday, May 16, 3:30-5:00pm, Low Memorial Library, Burden Room (206)

What is Global Dimming? With Beate Liepert, Doherty Associate Research Scientist, Lamont-Doherty Earth Observatory



Pedro Sanchez in Kenya with a smallholder farmer. By replenishing soil fertility using a technique developed and promulgated by Sanchez, corn production in many parts of Africa has dramatically improved.

## National Arbor Day Foundation Honors Work, Commitment of Earth Institute's Pedro Sanchez

The National Arbor Day Foundation (NADF) has announced Pedro Sanchez, Director of the Tropical Agriculture Program and Senior Research Scholar at the Earth Institute of Columbia University, the 2005 recipient of the J. Sterling Morton Award. The Award, named

One of the world's most populous countries, it has reduced the number of people living in extreme poverty by as much as 60 percent and is now a leader in global trade and annual growth. Experts from a range of fields convened at Columbia University on April 7, 2005 to discuss "China's Economic Emergence: Progress, Pitfalls and Implications at Home and Abroad." [more](#)

Report on Data and Information. Says Roberta Balstad, chair of the ICSU panel and director of CIESIN, "The collection and preservation of scientific data and information is essential to the current and future health of science, and ensuring that these data will be available to scientists now and in the future requires close collaboration across the scientific and policy communities." [more](#)

after the Foundation's founder and NADF's highest individual honor, is one among ten awards given to individuals and organizations for their leadership in championing tree planting, conservation and general environmental stewardship. [more](#)

---

### Comments and Suggestions

Contact our [editor](#)

[Past issues](#)

---

### Center for Research on Environmental Decisions Launched

A new center to investigate individual and group decision making under climate uncertainty and environmental risk has been created with a five-year National Science Foundation (NSF) grant of \$5.9 million. The Center for Research on Environmental Decisions (CRED), based at Columbia University, celebrated its official launch in a ceremony at Low Library on Wednesday, May 4. [more](#)